



NE Series™
Indoor Pool Dehumidifiers
The industry benchmark in quality and customer satisfaction



hotel residential spa/whirlpool
 competition swim insitutional school/university
 fitness club aquatic center physical therapy
 public/YMCA water park

SERESCO NE Series™ Dehumidifiers: innovation in natatorium air quality control

Getting what you want and need!

The environment in a natatorium should be the same as in any other room in a building: comfortable and healthy for the occupants and their activity, and provide good air quality.

Relative humidity, air temperature, water temperature and air quality are all key environmental aspects to control. High relative humidity levels are not only a problem to bather comfort and health, but can seriously damage the building structure possibly leading to building component failures. Revenues can also be affected in commercial facilities. Several hotel chains offer a full money-back guarantee should the hotel guest have any complaint regarding their stay.

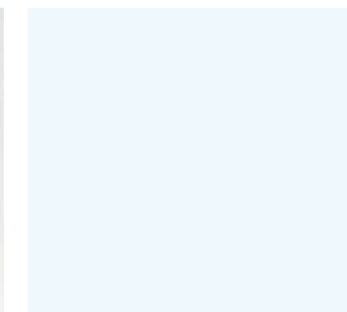
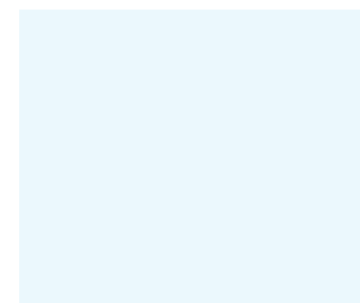
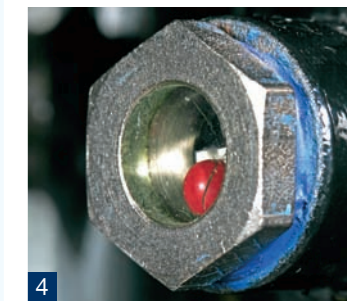
Not Just Another Dehumidifier...

Seresco Technologies Inc. was born from a team with over 50 years of collective industry experience and a desire to embrace technology and use it to produce products that set a new benchmark in the dehumidification and energy recycling industry. Use of new technologies and creative design advances combined with a solid engineering base in mechanical refrigeration, humidity control and manufacturing have together resulted in the launch of the first innovations seen in natatorium air quality control in the past 15 years. The NE Series™ has over 20 new exclusive innovations, making it clearly stand out from the competition.



- 1 High efficiency corrosion resistant plug fan
- 2 Direct drive blower, no belts means low maintenance
- 3 Fully dipped refrigerant coils for maximum corrosion protection
- 4 Refrigerant sight glass eliminates need to weigh in field charges
- 5 Pressure transducers eliminate need for refrigerant gauges
- 6 2" pleated return air filters
- 7 Motorized evaporator bypass damper for optimum performance
- 8 Fully piped/wired factory mounted space heating coils
- 9 Outdoor air intake with 2" pleated filter and manual air balancing damper (optional motorized damper)
- 10 WebSentry® internet monitoring – 24/7 control via the Web

See features comparison chart for the many more standard advantages.



Control your Indoor Pool Environment

The **Seresco NE Series™** is the complete solution for indoor pool environment control, offering innovative features never before seen in the industry. Using adaptive control strategies combined with sophisticated electronics and the latest in internet technology, **Seresco** is the only company that can be connected with a secure web browser to every unit installed worldwide via the Internet.

Seresco systems are the most reliable in the market today. The **Seresco NE Series™** is truly a new industry standard that advances the benchmark for customer satisfaction.



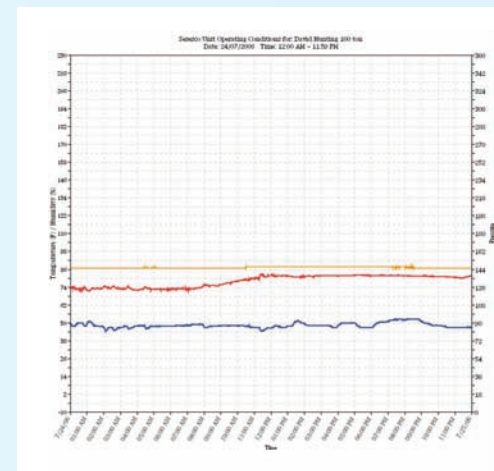
NE Series™ Indoor Pool Dehumidifiers

The industry benchmark in quality and customer satisfaction

CommandCenter®

The CommandCenter® is the brains behind the NE Series™ indoor pool dehumidification system. It is an advanced adaptive control system with user friendly features that ensure an optimal indoor pool environment.

The CommandCenter® monitors and controls the NE Series™ via a full range of unit-mounted sensors and is composed of a microcontroller system, a unit-mounted LCD display with keypad, an Ethernet interface, and WebSentry® – our web-based browser remote interface tool.



Monitor in Real Time via the internet!

- Plug and play connection
- 24/7 factory monitoring
- Ensures optimum system operation
- BACnet IP on same cable
- Permanent operating logs
- Eliminates nuisance service trips
- Email and pager alerts
- Simple, secure and reliable



WebSentry® allows owners, operators or service companies to remotely gain access to their Seresco dehumidifier via the internet. All units connected to WebSentry® are also automatically monitored 24/7 by the factory. Seresco systems are factory equipped with a multitude of sensors and refrigerant pressure transducers. All critical unit information is online and automatically updated to a secure central server. This information is permanently kept in a central database to assist in evaluating and optimizing long-term system performance.

Access to WebSentry® is controlled with a secure username and password. It provides an easy-to-use interface to any feature or control that can be accessed from the local CommandCenter® control panel mounted on the NE Series™ system. Setpoints can be adjusted, modes of operation can be tested, operational logs can be examined and more. The Service Mechanic Mode is also available for remote troubleshooting. Current alarms will even generate e-mails and/or pager calls to registered emergency contact persons!

The facility owner, especially those in remote locations will have the peace of mind that their units are being monitored by experienced factory technicians.

WebSentry® is the new standard in customer satisfaction and system reliability.

product performance

	MODEL NE	MOISTURE REMOVAL (LBS/HR)	AIR VOLUME RANGE (CFM)	SENSIBLE COOLING STAGE 2 (MBH)	TOTAL CAPACITY (MBH)	TYPICAL POOL SIZE (SQ FT)	
900 SERIES	920	11.7	720-1350	15.5	26.9	275	
	925	14.3	800-1350	19.2	33.1	330	
	930	16.1	960-1350	22.2	37.8	400	
	935	18.3	1040-1350	23.9	41.9	450	
004 - 016 SERIES	4	23.1	1600-3400	32.7	52.4	400	
	5	28.4	2000-3400	40.1	64.6	500	
	6	31.8	2400-3400	46.3	73.2	600	
	7	37.5	2720-3400	53.2	85.3	750	
	8	43.6	3040-6600	60.7	98.3	900	
	10	57.0	3680-6600	78.9	128.1	1200	
	12	65.7	4400-6600	91.7	148.3	1400	
	14	75.6	5120-6600	105.6	170.9	1650	
	16	87.2	6400-7200	121.3	196.5	2000	
	200 SERIES	208	46.2	3200-6800	65.3	104.7	800
		210	56.9	4000-6800	80.2	129.2	1000
		212	63.7	4800-6800	92.7	146.3	1300
214		75.1	5440-6800	106.3	170.6	1600	
216		87.2	6080-13200	121.3	196.5	2000	
218		100.7	6720-13200	139.6	226.4	2000	
220		114.1	7360-13200	157.9	256.3	2400	
222		122.7	8000-13200	170.7	276.5	2700	
224		131.4	8800-13200	183.5	296.7	2900	
226		141.3	9600-13200	197.3	319.3	3100	
228		151.1	10400-13200	211.2	341.9	3300	
232		174.4	10400-13200	242.6	393.0	4000	
018 - 140 SERIES		18	100.0	6400-7200	138.4	225.0	2000
		20	114.1	8000-12000	157.9	256.3	2500
	24	131.4	9600-14400	183.5	296.7	2900	
	28	151.1	11200-16800	211.2	341.9	3400	
	32	174.5	12800-19200	242.6	393.0	4000	
	36	201.3	14400-21600	279.2	452.8	4500	
	40	228.2	16000-24000	315.8	512.5	5100	
	45	258.3	18400-27600	358.2	580.9	5700	
	50	285.2	20000-30000	394.7	640.7	6200	
	64	365.0	24000-30000	505.2	820.0	8000	
	70	399.3	26250-35000	552.6	896.9	8700	
	80	456.3	30000-40000	631.6	1025.0	10000	
	90	513.3	33750-45000	710.5	1153.2	11200	
	100	570.4	37500-50000	789.4	1281.3	12500	
110	627.4	41250-55000	868.4	1409.4	13800		
120	684.5	45000-60000	947.3	1537.6	15000		
130	746.5	48750-65000	1026.3	1665.7	16400		
140	798.5	52500-70000	1105.2	1793.8	17500		



004-007 Vertical

004-007 Horizontal



008-016 Indoor

200 Series



018 - 140 Series

features

NE Series™ Features Comparison	900 Series	200 Series	004 - 016 Series	018 - 140 Series
WebSentry® internet monitoring and control	o	•	•	•
CommandCenter® microprocessor control	o	•	•	•
BMS interface - BacNet IP, ModBus or LonWorks	o	o	o	o
Performance enhancing liquid refrigerant sub-cooling circuit	•	•	•	•
Refrigerant high/low pressure transducers	o	•	•	•
Neutral reheat mode for optimum space temperature control	•	•	•	•
Cabinet designed to fit through 32" door	•	•	•	•
Service vestibule - compressors out of airstream	•	•	•	•
2 Independent refrigeration circuits		•	o	•
Outdoor package with integral air cooled condenser		o	o	o
Vertical or horizontal cabinet configurations	•	•	•	•
2" Double wall cabinet construction	•			•
High efficiency corrosion resistant plug fan	•	•	•	•
Direct driven blowers	•	•	•	•
Multiple supply air orientations	•	•	•	•
Sight glasses with float balls in each receiver		•	•	•
Compact 2 side only service access requirement	•	•	•	•
2 Stages of sensible cooling		•	•	•
Outdoor air intake with 2" pleated filter and manual air balancing damper		•	•	•
2" Pleated return air filters	•	•	•	•
Advanced sensor information displayed	o	•	•	•
Alarm status indication	o	•	•	•
Scroll compressors	•	•	•	•
Alternate refrigerants	•	•	•	•
Reliable 2 way solenoid valves	•	•	•	•
ETL listed	•	•	•	•
Fully dipped evaporative coils for maximum corrosion protection	•	•	•	•
Remote CommandCenter® panel	o	o	o	o
Motorized evaporator bypass damper for optimum performance		•	•	•
Purge-economizer mode and heat recovery configurations			o	o
Pool water heating with recycled energy	o	o	o	o
Air-conditioning mode: air-cooled or fluid cooled	o	o	o	o
Unit mounted space heating (including gas)	o	o	o	o

www.seresco.net | sales@seresco.net | info@seresco.net



U.S.A.

3688 Clearview Avenue, Suite 210
Atlanta, GA 30340
Tel.: 770.457.3392
Toll Free: 1.888.SERESCO
Fax: 770.457.3961

Headquarters

1283 Algoma Road, Unit # 1
Ottawa, Ontario, K1B 3W7
Tel.: 613.741.3603
Fax: 613.741.3375